

- Experienced People
- Proven Products
- Expert Processes
- A Great Value

CALL TODAY!

Residential Services



Foundation Repair
.....
Polyurethane
Injection Lifting
& Support
.....
Plumbing
& Tunneling

Over 25,000 successful foundation repairs

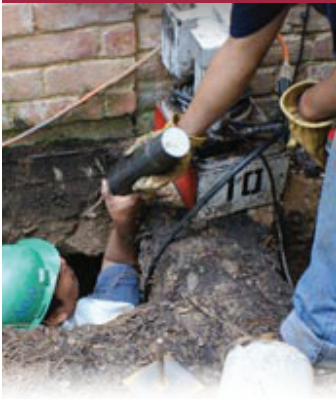
713-641-4844 • www.atlasfoundation.net





Residential Services

Foundation Repair



Foundation Plus™

U.S. PATENT #5,096,333

- Texas first Foundation Repair Patent
- Lifetime Warranty backed by Atlas Foundation Repair
- 6,000 PSI heavy duty Concrete Cylinder
- U.S. Patent #5,096,333



Foundation Plus™ HD

- Proven methodology and materials combine to provide **STRENGTH** and **DEEP PENETRATION**
- Unique **HEAVY DUTY CONCRETE FILLED Steel** segments
- This provides proven, durable **HIGH DEPTH** support in stable and unstable soil zones



Atlas Polyurethane



Injection Lifting & Support

Structural damage in concrete develops for a number of reasons. Choose Atlas when your concrete slab or structure requires recovery, or has cracked due to settlement and/or hydraulic pressure tolerances. Cracks can become more severe and lead to additional; often costly structural and cosmetic damage and destruction.

Benefits

- 3/4" access holes for injections are drilled - there is minimal intrusion to your structure
- The Atlas polyurethane product is hydraulically pumped under the concrete then it expands to fill the voids and raise the structure's slab filling voids and carefully lifting
- Our process and materials are efficient, and innovative using an environmentally responsible product.

Atlas Plumbing

Shane Edwards MPL #40833



Plumbing & Tunneling

At Atlas, we Tunnel to be able to reach parts of the foundation and to reach plumbing challenges under the interior of your structure. By digging access tunnels Atlas provides an alternative option to breaking holes through the slab. We also offer Hydrostatic Testing, Isolation Testing, Leak Detection, Tunneling and Trenching while executing below and above slab plumbing repairs.

Benefits

- Repair areas of the foundation or plumbing that are under the interior of your home
- Access from within your home while limiting potentially costly damage
- Avoid breaking holes through the slab, tearing carpet or cutting through wood, and or tile floors
- Minimal structural disruption